



# THOR IV VAULT DOOR



## VSI - THOR IV

### Security

All Thor IV Doors are designed to meet Underwriters Laboratories requirements as outlined in Standard for Safety U.L. 608 and carry the U.L. label for selected Class. The standard door has a 12" vestibule. Optional sizes are available.

### Installation

VSI or a local associate dealer will install your Thor IV Door anywhere in the world. All installation hardware,

including jack bolt assembly and door stop is included. The door is left completely protected after the installation process.

### Secure Construction

Construction includes special grade steel and high-strength concrete. A door "collar" is available to allow the door to be installed flush with the inside vault wall.

## TOP FEATURES

- The only UL rated Class M thru 3 double leaf door made in the USA
- Double leaf feature perfect for limited space projects
- 3 movement time lock with reset and release feature (optional)
- Two mechanical combination locks
- Day lock
- Emergency vault ventilator with pass through
- Alarm door contact
- Alarm rate of rise thermostat
- Several options for day gates
- Nonskid threshold
- Black acrylic access doors cover internal mechanisms.

### Options

- Emergency inside release
- Third combination or key lock
- Alarm wrap imbedded in core of door
- Smoke finish, rod style, split daygate
- In-door telephone
- Custom sizes
- Finishes, logos
- Ramps
- Optional access door packages
- Various lock options

### Custom Design

The Thor IV attractive design and massive appearance will complement any décor. The satin smooth fine grained stainless steel finish covers every visible surface. Your choice of custom designed logos and special finishes, including paint, are also available.



Manufacturer reserves the right to change product specifications without notice.

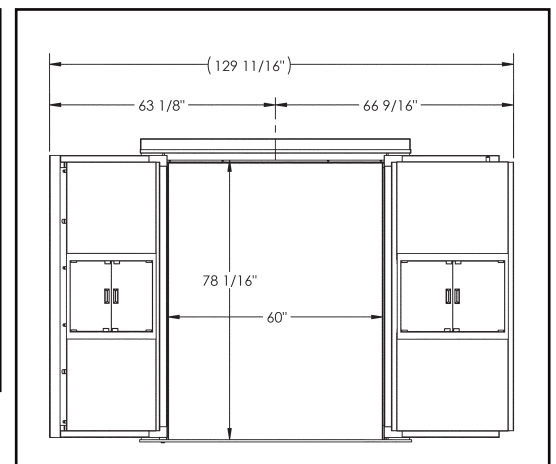
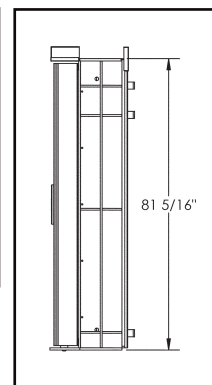
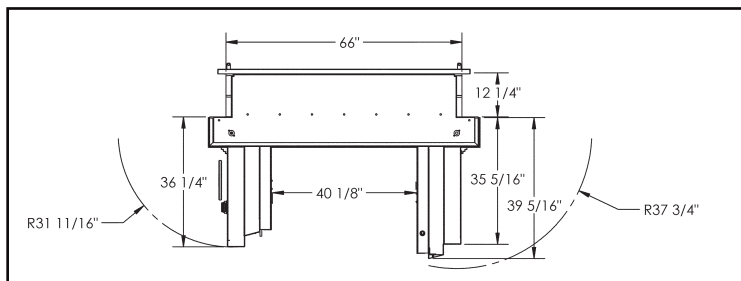
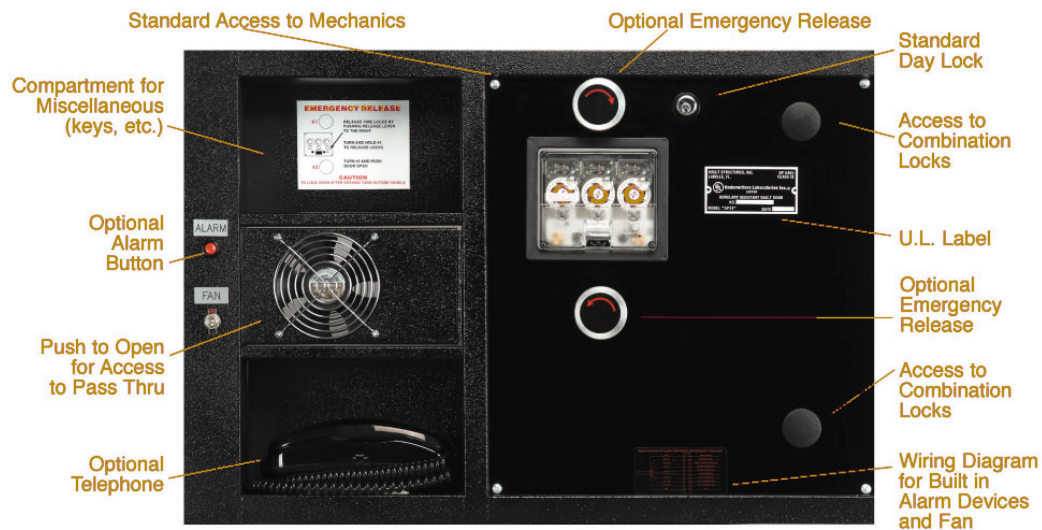


# THOR IV VAULT DOOR

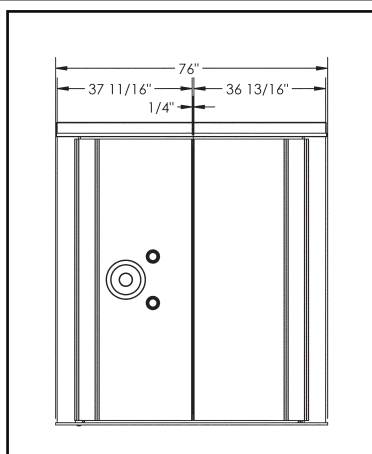
## Safety, Flexibility & Security

*Thor IV is constructed of special-grade steel and high strength concrete.*

### Close Up Interior Door Components



Drawing of standard door



\*Example Size



Manufacturer reserves the right to change product specifications without notice.